

Great South Coast  
Regional  
Engagement



A collaborative partnership between



Families, Fairness and Housing






# Rural & Regional Liveability Forum 1 Feedback -B

1

## How could the framework be strengthened?

1. Suggested "Principle" modifications	Freq
Equity	1
Can't see where equity quite fits	2
Need to include equity = rural and remote equity and the difference between small centres, regional cities, vs Melbourne	3
Diversity – has to have equality – indigenous layer as well	4
Gender equity lens	5
Equity - Funding models not equitable – people have to travel to access to services, services not funded appropriately for travel, why should there be a different level of service and standard in smaller communities.	6
Need to address equity and accessibility	7
Did not appear to address rural and regional inequality and disadvantage and gender inequality as a broader issue.	8
- Gender equity lens – need more recognition of it and its impact on health, employment, remuneration - Cultural equity, and SDOH re low SES groups – and the impacts - Rural and remote equity – small communities not well serviced by outreach models, funding doesn't allow full provision - Equity in education – disengagement of students with refugee status or from countries with significant trauma.	9

15

## How could the framework be strengthened?

2. Suggested "Element" modifications		Freq
Water Security		1
Waste - sewage, & recycling		2
Energy		3
Food land and water not reflected – we take for granted food security.		4
Food Security		5
Personal connection – what does this refer to?? free of discrimination? Race, culture, religion – is that the intent?		6
3. Suggested "Influence" modifications		Freq
Climate change – is down as a global/national issue but should it be a liveability issue?		1
Natural disasters – should be under local as it includes fires and floods		2
Global influences – COVID (public health – it's a disease not a disaster) – include other public health issues		3
We need to further highlight "remoteness and distance" as a key factor because this is very pertinent to where we live.		4
4. Suggested "Domain" modifications		Freq
Lifestyle (domain) not sure how it relates or doesn't resonate as much as the other domains		1
Agriculture might be a category for inclusion		2
Agriculture (particularly in our region)		3

16

## How could the framework be strengthened?

5. Make the framework meaningful to key target groups
Needs to have an indigenous layer
Putting indigenous layer in there says something about our region.
Recognise country plans in everything we do. So much rich history
From an Aboriginal point of view, need time to communicate with other first nations people so involve more diversity.
Could be issues around language, concepts and values from First Nations point of view
In Aboriginal community there is a value around collective decision making rather than just by leadership
Whose version of liveability are we talking about – huge pockets of generational poverty and violence
Feels a bit middle class and one dimensional.
Needs to include capacity building and how people play a role
Need to see regional disadvantage
Yarning is a concept that enables involvement by many in an aboriginal context
Community Liveability, but is community at the centre/heart – feels like more about external influences than community
Issue around skills and capacity – expectations on both agencies and communities are increasing.
How do we link community voices into this conversation – might feel like this is imposed from above –
Coverage of both GSC and Wimmera – huge geographically and disparate. GSC very large on its own. Need to understand the framework's application in practice.
Need to focus on all levels, particularly local - local is what differentiates communities in WSW. Even towns within the same locality, can have very different experience – e.g. service availability and provision. Even bigger centres have issues with services.
Collaboration: requires professional skills, as well as capability and resources to support collaboration
Regions have resilience – probably does not show me how the individual can change this.

17

## How could the framework be strengthened?

### 6. Define Liveability in terms of who it applies to and its purpose

Liveability – means different things to different people – could this potentially be defined?

Liveability is not the same for everyone – misses the differences in people's experiences

What is the 'Liveability' part of the framework specifically related to?

Understanding purpose of framework and what it's trying to achieve still – still not completely sure of the purpose

It would be great to see some clear mapping of the organisations that sit in each element across the region to understand our role and how we could connect in with other organisations.

### 7. Criticism of the Framework

The framework is a bit busy.

Feels like an external assessment of community rather than community as a driver

Feels like a show and tell rather than developed by community

Could having the framework be limiting? There is a risk that people won't think of wider issues beyond what's included

HWB plans are very middle class and don't resonate with all in the community.

18

## How could the framework be strengthened?

### 8. Defining the processes

Defining how to implement "here and now" besides current action.

Getting the priority focus areas right.

Defining how the big picture applies to the individual.

Defining how the R&RL framework will influence what we are doing directly and more broadly.

Defining who decides the selection of focus areas and making sure everyone is involved in the decision.

### 9. Need Indicators to inform Rural & Regional Liveability

Is there a consistent set of indicators to measure liveability?

Interested in definitions and defining data with different geographical communities having differing values.

Need to see the data and how this was presented

Number of orgs doing their own version of liveability (Melb etc.) – is there a benchmark for the framework with other places and frameworks – can it be consistent and comparable to others?

Good to have community data to back up elements – will make it easy to communicate why elements were selected

Look more broadly than Great South Coast – look regionally and nationally

Benchmark – state-wide – is there some commonality in the benchmarks – measuring across other regional areas

Need to measure population change. Social services and connectivity – public transport etc..

What is community needs defining?

Maybe need to look at liveability scales

19

## What would be one focus area which could transform R&RL into the future?

1. Rural Equity in Service Access & Funding	Freq
Health and community service funding models based on population density in rural areas have had significant negative impacts on, service provision, employment, workforce attraction, service accessibility in smaller towns, diversity of employment, and staff health and safety. It's created market failure, unacceptable waiting times, and the requirement to travel large distances to access service. With too many barriers to access service our communities simply stop using these services. Delayed treatment due to a lack of access ends up costing the health system more in the long run because of worsening health conditions requiring more costly specialised treatment, and increasing rates of avoidable hospital admissions, and preventable burden of disease (years of lost life and disability adjusted life years) compared to metropolitan communities.	4
Rural outreach in service delivery across the GSC region is essential as farmers often can't leave their farms. With acute crisis and suicidal risk services unable to adequately cover transport costs, and the time required to reach clients, smaller rural communities simply don't receive these critical services, without long delays and a requirement for consumers to travel.	1
Equity of access –(principle) cuts across everything, food security, education, services etc –	1
Access is a big one (principle)	2

20

## What would be one focus area which could transform R&RL into the future?

2. Increasing Housing Availability & Affordability	Freq
Housing is a limiting factor for many elements, principles, focus areas and overall liveability. With higher rates of migration due to COVID, large infrastructure development (wind towers and gas development) and the ability to work from home, we have seen a significant increase in housing demand, escalating housing prices and rental costs. Housing is becoming unaffordable even for average working people, let alone those relying on social security. Crisis and temporary accommodation still remain a significant issue for the GSC region, with homeless services unable to house people in need, especially during holiday periods.	6
3. Improve Digital Connectivity for All	Freq
Digital Connectivity for all, can positively affect so many elements and focus areas and overall Rural and Regional Liveability. We need to look at initiatives at multiple levels, accessibility and affordability at a higher regional level, and skill development of people at a local level, E.g., Device Advice via Neighbourhood Houses & Councils	6
4. Gender & Indigenous Inequality	Freq
Equality with a focus on gender and indigenous.	1
The rising rates of violence against women by their partners especially young males is disturbing.	1
Recognise country plans in everything we do. So much rich history	1

21

## What would be one focus area which could transform R&RL into the future?

5. Strengthen Community Connectivity & Social Connection for All	Freq
<ul style="list-style-type: none"> <li>- To collectively share resources and intelligence amongst service providers and community to improve social connection and digital connectivity.</li> <li>- Creating and investing in multiple safety nets for different population groups and filling gaps especially for those at increased risk of racism, discrimination and inequity at places such as:               <ul style="list-style-type: none"> <li>o Sporting Clubs, Men's Sheds, Neighbourhood Houses</li> <li>o Health Service &amp; Council Activity Programs &amp; vulnerable group supports</li> <li>o Progress groups and volunteering</li> <li>o Employment</li> <li>o Arts and Culture</li> <li>o Investing in community capacity which creates more connection</li> </ul> </li> </ul>	5
6. Sustainable Employment for All	Freq
<p>There is a requirement for workforce attraction and employment strengthening initiatives to occur collectively across the GSC region. These initiatives need to focus on sectors and age groups with high levels of employment insecurity. For example, the disability sector, youth as an age group, and addressing issues like the casualisation of the workforce.</p>	2

22

## What would be one focus area which could transform R&RL into the future?

7. Climate Proof Social Housing	Freq
Community South West Inc. Is working in partnership to climate proof social housing.	1
8. Increase the Diversity of our Populations - Targeted migration & resettlement	Freq
There are plenty of great examples across Victoria where targeted migration has significantly improved the liveability of rural communities. E.g., Swan Hill and Nhill	1
9. Audit gaps & apply solutions across every element in view of the principles & influences	Freq
The Rural & Regional Liveability (R&RL) Framework in terms of the listed elements, and the overlay of the principles and influences holds the key to transforming R&RL into the future. Noting the complexity of the issues we face requires multiples strategies at different levels. The framework provides the roadmap to develop a systematic listing of actions to transform R&RL post an audit.	1
10. Access to Tertiary Education, & Training to address local workforce needs	Freq
Our youngest and brightest are forced to leave the Great South Coast region because of a lack of access to the full range of tertiary courses. This has many knock-on effects including a lack of locally trained health professionals particularly in the area of allied health where there is a shortage. We also see a hollowing out of the population where we have lower numbers of 18-24-year old's who add vibrancy to our communities. There also is a cohort of youth whose parents can't afford University, and have low aspiration to succeed, adding to reductions in employment diversity and medium incomes. We have an aging health and community service workforce and need to create incentives for young people to aspire to fill these workforce shortages, increase annual incomes and drive our economy.	1

23

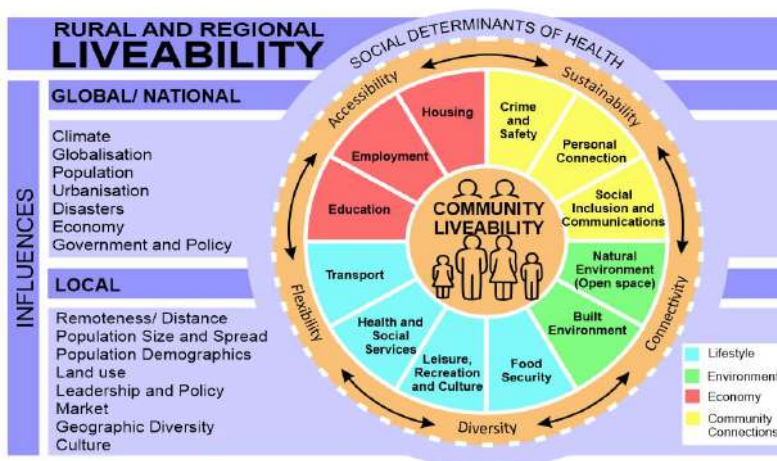
## What would be one focus area which could transform R&RL into the future?

11. Climate Change	Freq
<p>The Great South Coast Regions Economy is dependent on Agriculture, Forestry, Fishing and Aquaculture. These industries are dependent on good seasonal conditions to remain viable. This includes having enough water (rain) and water storage (water security) to grow hay and fodder. While our region is currently benefiting from a Lanina weather pattern, over the last 10 years we have had 6 out of 10 failed spring breaks in terms of hay and fodder production. We also have had an increase in the number of Disasters from bushfires and floods, and an increase in extreme temperature days which has had devastating effects on the health and wellbeing of the elderly, especially those from socio-economically disadvantaged backgrounds. We need solutions at all levels; from improving water security for agriculture, to building the resilience of disadvantaged communities to mitigate the effects of climate change.</p> <p>A vibrant economy underpins the liveability of our communities and therefore it is critical we protect and develop solutions which mitigate the highest climate change risks, especially those that negatively impact the economy, and the cascading impacts on the elements and principles of Rural and Regional Liveability.</p>	1
12. Addressing Barriers to Remoteness & Distance	Freq
<p>While remoteness and distance has been identified as an influence, it is a significant point of difference for the Great South Coast region which needs partnership advocacy and effort to deliver a range of strategies. Whether it's related to more public transport options or better digital connectivity this focus area is central to improving Rural &amp; Regional Liveability.</p>	1

24

## Check in- Poll

- Does the Rural & Regional Liveability framework presented today add value to your work?

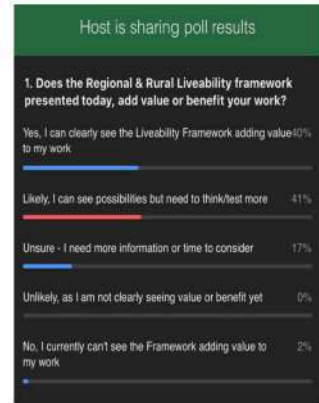


25

## Poll - Results

- Does the Regional & Rural Liveability framework presented today add value to your work?

81% of participants agreed they could either; clearly or likely see, the possibility of the R&RL framework adding value to their work

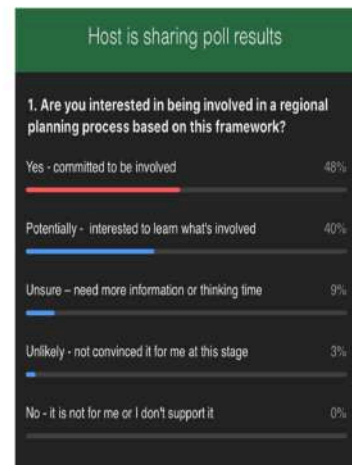


26

## Check in - Poll

Are you interested in being involved in a regional planning process based on this framework?

88% of participants agreed they were either; committed or potentially interested in being involved in a regional planning process based on this framework.



27