

Great South Coast Regional Engagement



Rural & Regional Liveability Forum 1 Feedback -A

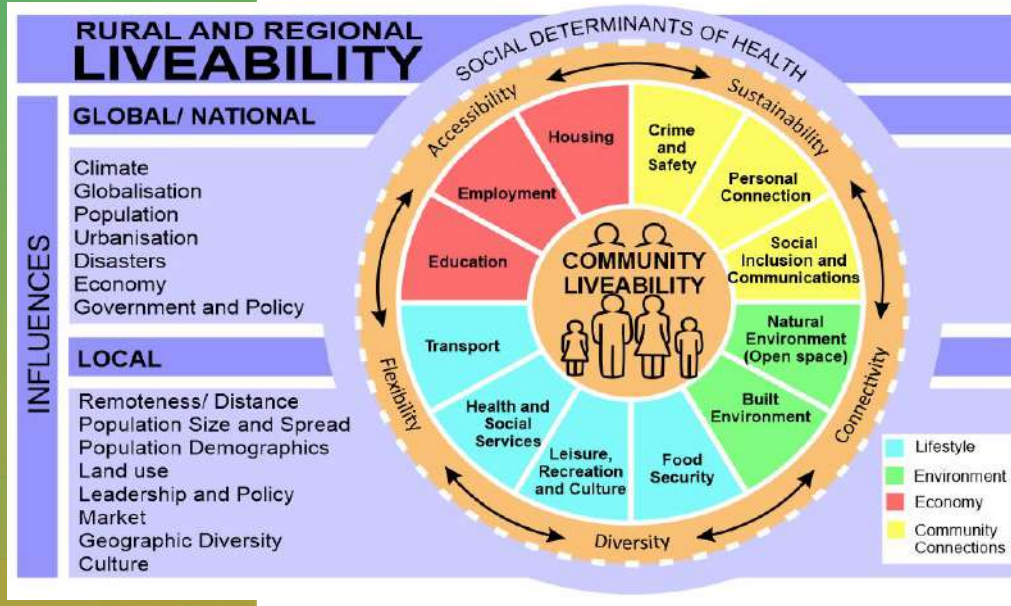
1

Who participated

Contact	Organisation	Contact	Organisation
Adam Riley	DHHS	Karen Walsh	YACVIC
Alex Bell	South West Healthcare	Katharina Redford	Moyné Health Service
Alison Farrar	DELP	Katie Hearn	Corangamite Shire
Amanda Miggins	DHHS-WSW	Kellie King	Wannon Water
Andrew Sloane	SWSport	Laura Stevenson	Terang & Mortlake Health Service
Anne Waters	Heespace - Brophy Child and Family Services	Lauren Dempsey	Grampians Pyreness
April Hatley	Centacare	Lisa McLeod	Connect Consulting
Ashleigh Glennon	South West Healthcare	Louise Serra	Anglicare Victoria
Belinda Conna	Greater Shepparton City Council	Lucy Quinn	Corangamite Shire
Bernadette Northeast	Glenelg Hopkins Catchment Management Authority	Lucy Spanwick	WVPHN
Brenda O'Connor	Merrivale Community Ass. & Unpackaged Food Coop	Lyn Eales	Brophy Child and Family Services
Carlo Ticchi	DET	Lynda Smith	South West PCP
Carly Dennis	Women's Health BSW	Margaret Cadenhead	Portland District Health
Catherine Darkin	DHHS	Mark Brennan	South West PCP
Cathryn Walder	Life4 Life	Mark Fidge	SWTAFE
David Brydson	Warrnambool City Council	Mark Powell	WRAD
David McIntyre	South West PCP	Matthew Ross	AFL Western District
David Rae	Corangamite Shire	Megan Howard	Greater Shepparton City Council
Dedy Frebe	Food Share	Neil Arendshorst	DHHS
Doreen Power	Lyndoch Living	Nikita Wheaton	South West Healthcare
Elyse Barker	WVPHN	Penny Fraser	Deakin University
Emma Van Smale	25eight	Peter Lake	WSW Aboriginal Organisation Representative
Fiona Davey	Moyné Shire	Prabhjot Kaur	South West PCP
Glenda Stanislaw	South West PCP	Richard Zerbe	Community South West
Jaimie Miller	Warrnambool City Council	Rowena Wylie	Southern Grampians Glenelg PCP
Jane Ruge	Glenelg Shire	Ruth Isble	Emma House
Jane Walker	Glenelg Hopkins Catchment Management Authority	Ruth Payne	Colac Area Health
Janette Lowe	Southern Grampians Glenelg PCP	Seona Taylor	Regional Development Victoria
Janice Harris	Cooinda Terang Inc	Simone Dalton	DHHS
Jerome Payton	Ambulance Vic	Sue Daly	DHHS
Jill Warne	WVPHN	Susie Lyons	Glenelg Shire
Jo Brown	Southern Grampians Glenelg PCP	Synthia Johnson	SWTAFE
Jo Grant	Regional Arts Victoria	Tracey Burgess	DHHS
Jock Whiting	AFL Western District	Ursula Murphy	SWTAFE
Joe Anne Nicholas	Oz Child	Vikki King	Warrnambool City Council
Julie Amor	Kyeema Support Services Inc.		

2

The Framework



3

Chat Time

What combination of **elements & principles** does your organisation influence?

- Use the chat to identify your:

Agency Type – Role – Element - Principle

Example: Community Health – Manager – Health & Social Services - Accessibility

- Feel free to add more than one.



4

What combination of elements & principles does your organisation influence?

Organisation	Role	Element	Principle
Brophy Child & Family Services - Headspace	Manager	Health & Social Services Personal Connection	Connectivity
Brophy Child & Family Services	LGBTIQA+ & Migrant Supports	Social Inclusion Personal Connection Health & Social Services	Accessibility, Connectivity, Diversity
Centacare - Victims Assistance Program	Coordinator	Health & Social Services	Accessibility, Connectivity, Flexibility
Colac Area Health	Area Services Manager	Health & Social Services	Accessibility, Connectivity, Sustainability
Community South West	Executive Officer	Health & Social Services	Connectivity & Sustainability
Connect Consulting	Director	Social Inclusion Communication Built Environment Food security	Accessibility, Connectivity, Diversity, Flexibility, Sustainability
Corangamite Shire Council	Manager Community Development	Health & Social Services	Accessibility
Deakin University	Researcher	Education Health & Social Services	Accessibility, Connectivity, Diversity, Flexibility, Sustainability
Department of Education	Manager	Social Inclusion Personal Connection	Accessibility
Department of Environment Land Water & Planning	Manager	Natural Environment	Flexibility & Sustainability
Emma House Domestic Violence Service	Chief Executive Officer	Health & Social Services	Accessibility, Diversity
Food Share	Executive Officer	Food Security	Accessibility
Glenelg Hopkins CMA	Manager	Natural Environment	Sustainability
Glenelg Shire Council	Community Wellbeing Manager	Health & Social Services	Accessibility, Connectivity, Diversity
Grampians Pyrenees PCP	Executive Officer	Health & Social Services	Accessibility, Connectivity
Grampians Pyrenees PCP	HP Coordinator	Health & Social Services	Accessibility, Connectivity

5

What combination of elements & principles does your organisation influence?

Organisation	Role	Element	Principle
Kyeema Support Services	Chief Executive Officer	Social Inclusion Personal Connection	Connectivity
Merrivale Community Association	Secretary	Social Inclusion Personal Connection	Sustainability
Moyne Shire Council	Manager Community & Corporate Strategy	Social Inclusion Personal Connection	Connectivity, Diversity
Oz Child	Community Services Manager	Health & Social Services	Accessibility, Flexibility, Sustainability
Portland District Health	Executive Comm Health	Health & Social Services	Accessibility, Flexibility
Regional Arts Victoria	Manager	Social Inclusion Personal Connection	Sustainability
South West Healthcare	Team Leader HP	Health & Social Services	Accessibility, Connectivity, Sustainability
South West Healthcare	HP Coordinator	Health & Social Services	Accessibility, Connectivity, Sustainability
South West Healthcare	HP Coordinator	Health & Social Services	Accessibility, Connectivity, Sustainability
South West PCP	Evaluation Coordinator	Health & Social Services	Accessibility
South West PCP	HP Coordinator	Social Inclusion Communication	Connectivity
South West PCP	Pop'n Health Coord	Health & Social Services	Connectivity, Flexibility, Sustainability
Southern Grampians PCP	Project Officer	Health & Social Services Education	Accessibility, Diversity, Flexibility
Southern Grampians PCP	Manager HP	Health & Social Services	Accessibility, Connectivity, Diversity, Flexibility, Sustainability
Wannon Water	General Manager	Social Inclusion	Accessibility, Connectivity

6

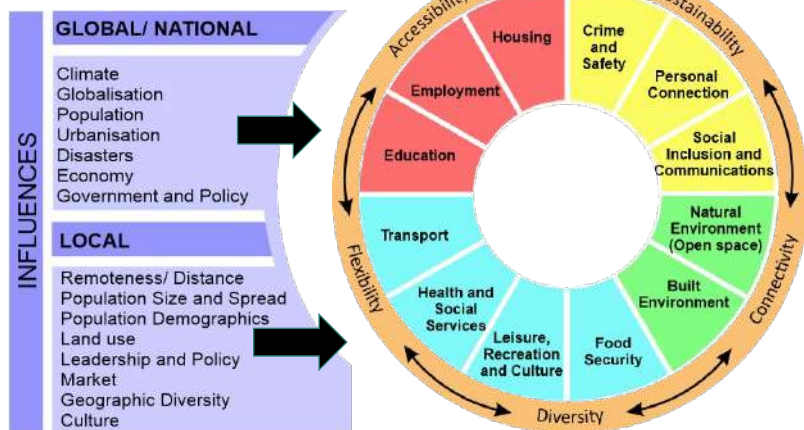
What combination of elements & principles does your organisation influence?

Organisation	Role	Element	Principle
Wannon Water	General Manager	Social Inclusion, Health & Human Services	Accessibility, Connectivity, Diversity, Flexibility, Sustainability
Wannon Water Warrnambool City Council	General Manager Social Connections Project Worker	Food "Water" Security	Accessibility, Connectivity, Diversity
Wimmera PCP	HP Coordinator	Health & Social Services	Accessibility, Connectivity, Diversity, Flexibility, Sustainability
Women's Health -BSW	Manager	Health & Social Services	Accessibility, Connectivity, Diversity, Flexibility, Sustainability
WRAD	Operations Manager	Health & Social Services	Accessibility, Connectivity, Diversity
WSW Family Violence Partnership and GHCMA	Chair Regional Family Violence Partnership & Senior Manager	Natural Environment Crime & Safety	Accessibility, Sustainability
WVPHN	Population Health Planner	Health & Social Services	Accessibility, Connectivity, Diversity, Flexibility, Sustainability
YACVic	Executive Officer	Health & Social Services	Accessibility, Connectivity, Diversity, Flexibility

7

Check in-Chat

- Is there an influence missing?
- If yes, pop it in the chat



8

Check in-Chat

- Is there an influence missing?
- If yes, pop it in the chat

Suggested modifications to Influences
Water security being clear as part of food security
Water security
Food, water, energy
Inequality
Gender equality
Gender equality
Emergencies, calamities, disasters
Emergency and risk management
Innovation
Technology and disruption
Impact of colonisation

9

Check in-Chat

- Is there an influence missing?
- If yes, pop it in the chat

Suggested modifications to Influences
Industrialisation
Collaboration
Partnership
Social and economic recovery from a pandemic
Cultural and social safety for diverse communities
Technology
Investment - financial influences.
Environmental degradation and biodiversity loss
Environmentally sustainable food and water security
I wonder if there needs a state lens as there are influences at a state level that influence.
Community skills

10

What do you like about the framework?

1. Simple & Logical

	Freq
It's seems pretty straight forward to identify where you fit in & what to do in terms of the framework components	1
It's simple, easy to read and to think about (it) R&RL.	2
It's a logical framework, the explanation makes sense.	3
A logical framework	4
A really comprehensive and straight forward framework	5
Visually pleasing	6
Simple document for a complex issue	7
Solid framework, adaptable	8
Comprehensive, holistic, inclusive	9
Simple	10
Image on a page that reflects diverse scope	11
Makes sense	12
Very comprehensive	13
Framework looks comprehensive	14

11

What do you like about the framework?

2. Provides a Holistic, Big Picture, Systems View

	Freq
Gives you a broader perspective on how a project (focus area) could impact/influence various elements/R&RL.	1
Allows me to clarify where we fit from a strategic point of view which is helpful.	2
It's a tool to frame thinking and blur the lines between silos/departments/areas of responsibility	3
Invites you to consider the bigger picture, and the interconnecting components and who else we can work with.	4
You can put yourself into the framework and it would apply	5
I like that it takes a system view which is holistic.	6
Contemporary for today with principles and inter-relationship	7
Breaks down silos	8
Good that it looks at the interrelationships, in our systems work and how to get more 'bang for our buck' by focusing on multiple areas of impact from one piece of work/ strategy	9
Could also assist with prioritising different focus areas	10
Framework will help with understanding links with council vision	11
Like how it shows how things are interrelated, so issues are not seen in isolation – this helps when thinking about impacts of action, can see potential for multiple impacts from a single strategy	12
Lenses good to have them explained	13

12

What do you like about the framework?

3. Enables Collaboration and Partnership		Freq
Very applicable – good for partnering with different partners – collectively will help to impact ‘whole of community’		1
Good for facilitating collaboration and partnerships		2
Creates partnerships		3
Great tool for collective action		4
Health is the business of everyone, including all sectors in strategy development – collaboration is critical – framework supports collaboration		5
4. Enables a Determinants of Health Focus		Freq
Social determinants influence important		1
Driven by environments for the Social Determinants of health		2
Framework is good, can assist with coverage of areas SDOH – show if sufficiently covered		3

13

What do you like about the framework?

5. Supports Future Planning Processes		Freq
Assist with future planning		1
Good timing re LGAs doing community visions		2
Focusses in and uses plain language, useful for planning for funding/ covering all aspects		3
6. Adds Capacity and Value		Freq
Great that someone else has done all this work to put it all together.		1
A lot of work has gone into it.		2
I’m looking forward to seeing how many of these ideas are implemented		3
7. Shines a Light on Community Needs		Freq
Health and wellbeing doesn’t get the attention and this process/framework is a vehicle to meet this end.		1
Opportunity to discuss the vulnerability of our communities.		2

14