



Great South Coast
Regional
Engagement



A collaborative partnership between

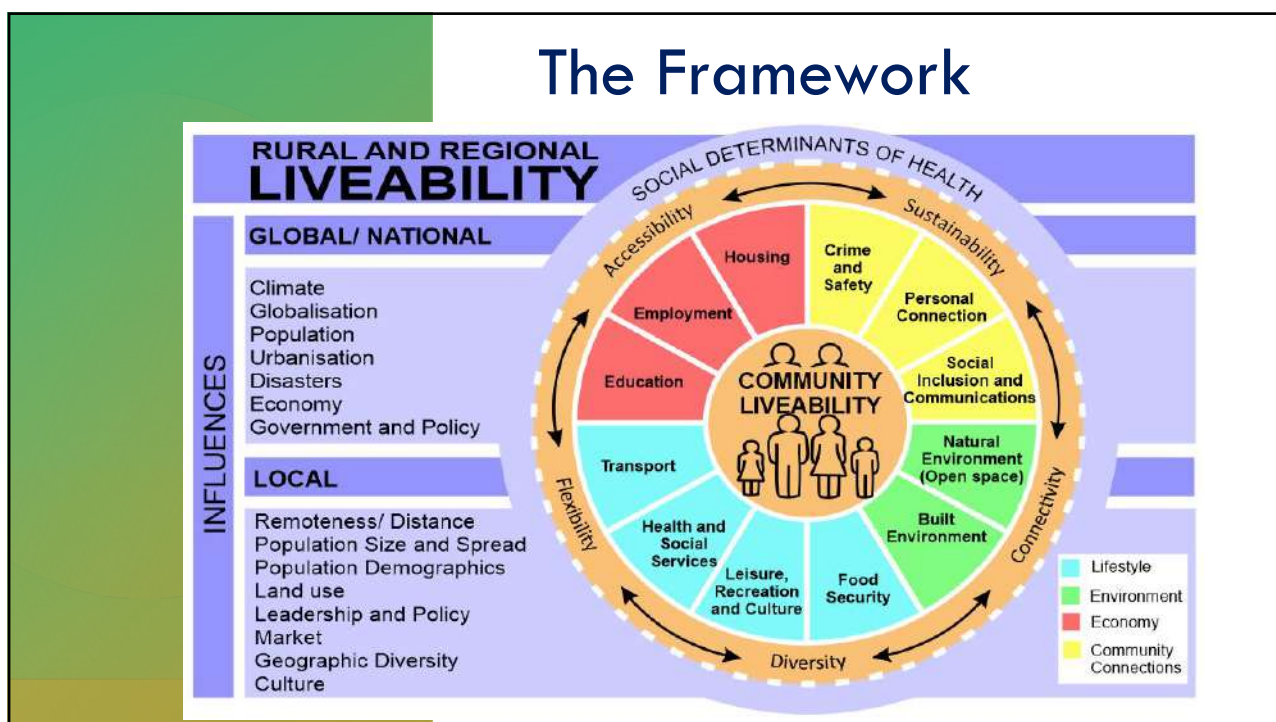


Rural & Regional Liveability

November 2020


Framework Overview Part A

1



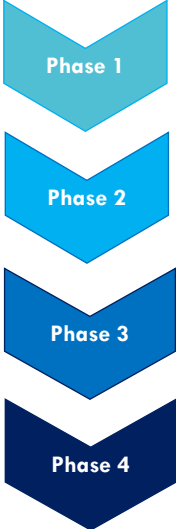
2

Create an integrated approach



Phases of Development

- Seek support for a Rural Regional Liveability (R&RL) Framework
- Create the evidence base to inform the direction
- Define Focus Areas to Transform R&RL
- Develop a long term GSC R&RL Action Plan



Phase 1

Phase 2

Phase 3

Phase 4

3

Creating the evidence base to inform the future direction

Phase 2

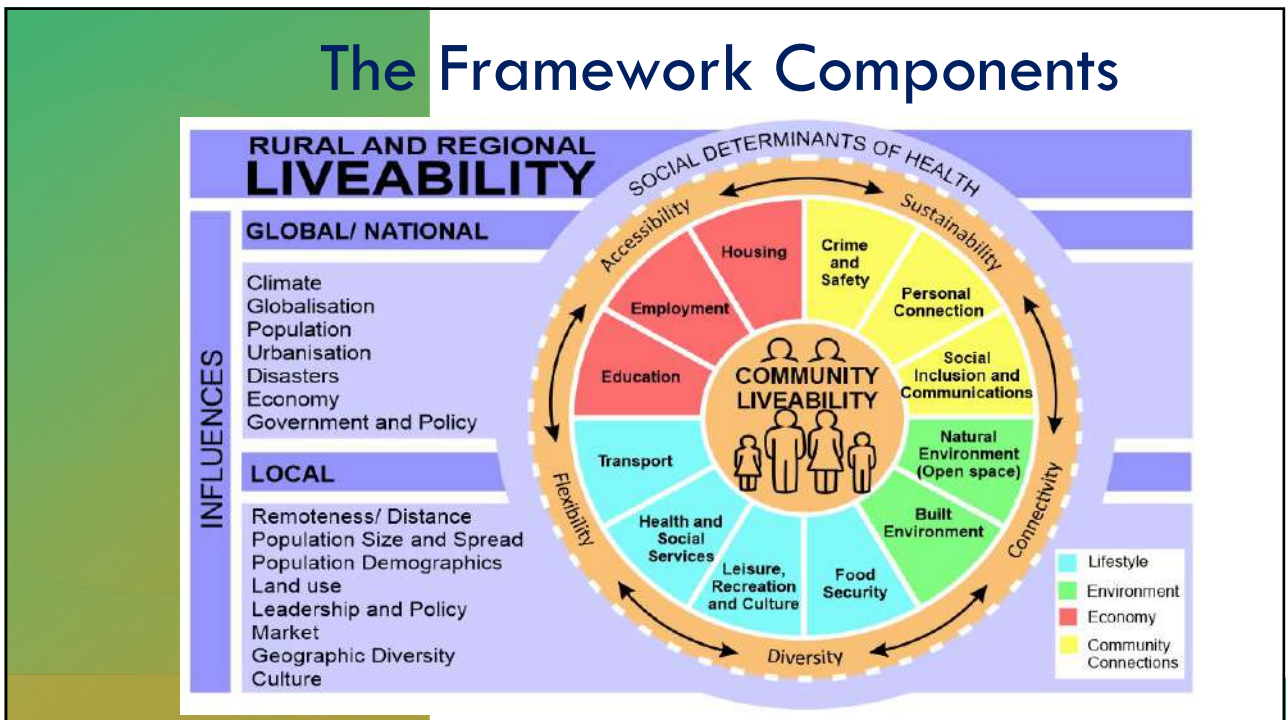


4

Creating the evidence base to support local planning

Phase 2

5



6

Elements:

Are the basic ingredients for sustainable; growth, development, and health & wellbeing for all.



Independent of age, gender, sexuality, religion, ethnicity, culture or social & economic status.

7

Domains:

The triple bottom line - striking a balance between social, economic and environmental needs.

 Community Connections

 Environment

 Economy

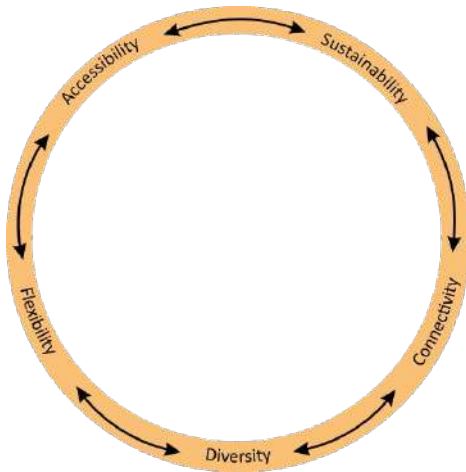
 Lifestyle



8

Principles:

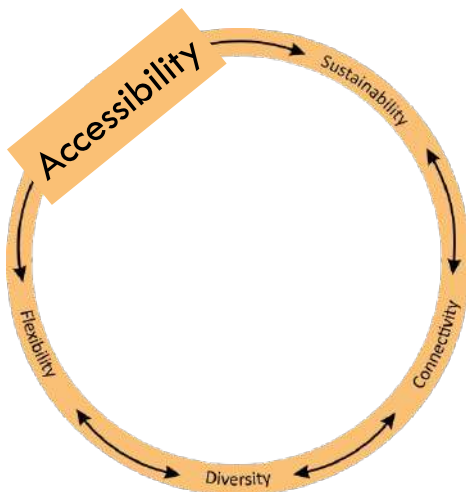
Governs how well each element optimizes liveability for different population groups.



9

Accessibility:

Considers equity, equality and inclusion, & the availability & affordability of services to meet basic needs.



Element Alignment



Independent of: age, gender, sexuality, religion, ethnicity, culture or social & economic status.

10

Connectivity:

Considers the means & ways of being linked to: people, networks, services, facilities, & information to optimise participation & collaboration.

Element Alignment

| | | | | | |
|--|----------------------|-------------------------------------|--|------------------|-------------------------------------|
| Social Inclusion and Communications | Personal Connection | Social Inclusion and Communications | Built Environment | Transport | Social Inclusion and Communications |
| | | | | | |
| + - | + - | + - | + - | + - | + - |
| Civic Participation Social Connection Volunteering | Belonging & Identity | Welcoming & Inclusive Facilities | Active Travel Footpaths & Cycleways | Public Transport | Mobile & Internet Coverage |

Independent of: age, gender, sexuality, religion, ethnicity, culture or social & economic status.

11

Diversity:

Refers to the availability of the full range of services. e.g. Towns may not have specific treatment services, businesses or practitioners to choose from.

Element Alignment

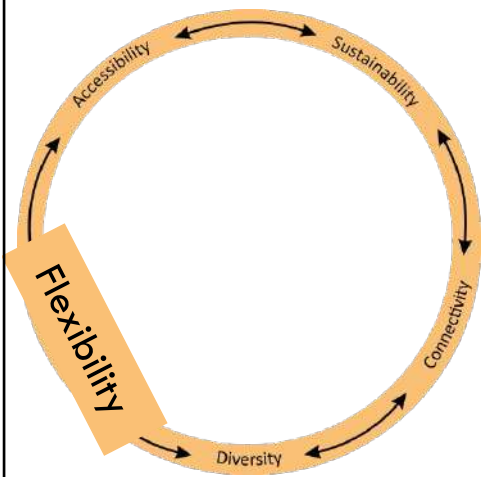
| | | | | | |
|--|----------------------------------|-----------------|---|---|---|
| Transport | Employment Education | Housing | Education Health and Social Services | Built Environment | Leisure, Recreation and Culture |
| | | | | | |
| + - | + - | + - | + - | + - | + - |
| Bus & Train Stop Locations & Timetables | Employment & Education Diversity | Housing Options | Outreach, tele-services & education options | Diversity of open space & public & private assets | Diversity of sport, leisure & social connection spaces & places |

Independent of: age, gender, sexuality, religion, ethnicity, culture or social & economic status.

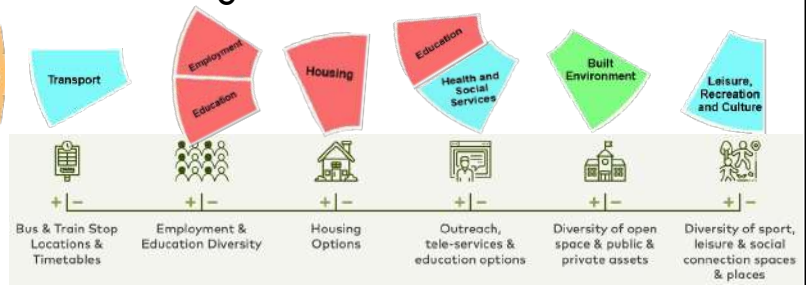
12

Flexibility:

Refers to preparedness & adaption of community to changing community circumstances and needs.



Element Alignment



Independent of: age, gender, sexuality, religion, ethnicity, culture or social & economic status.