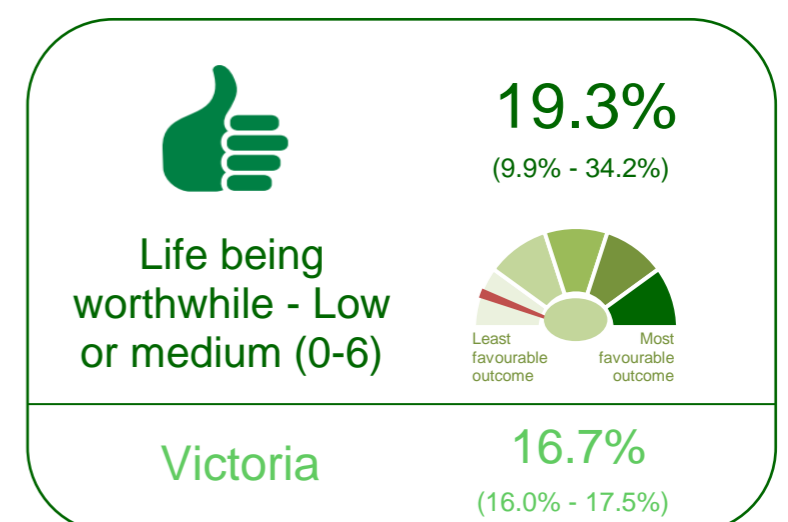
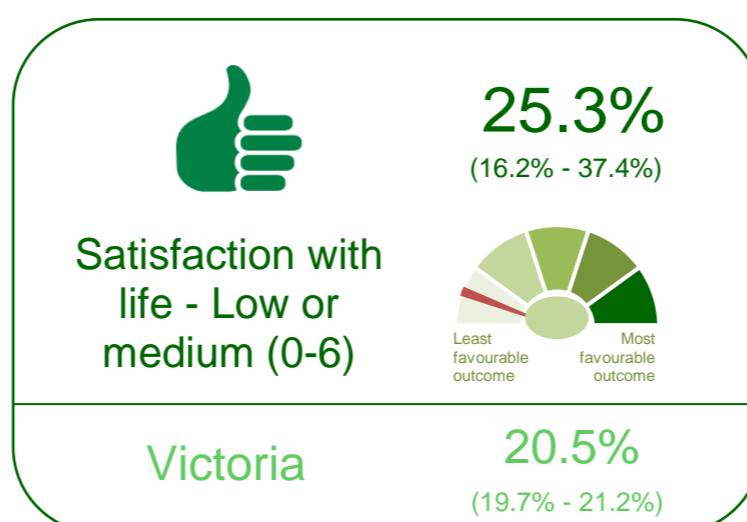
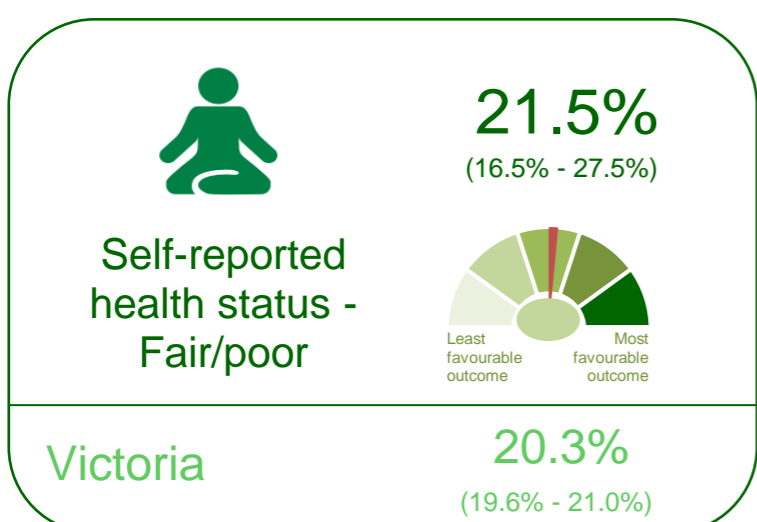
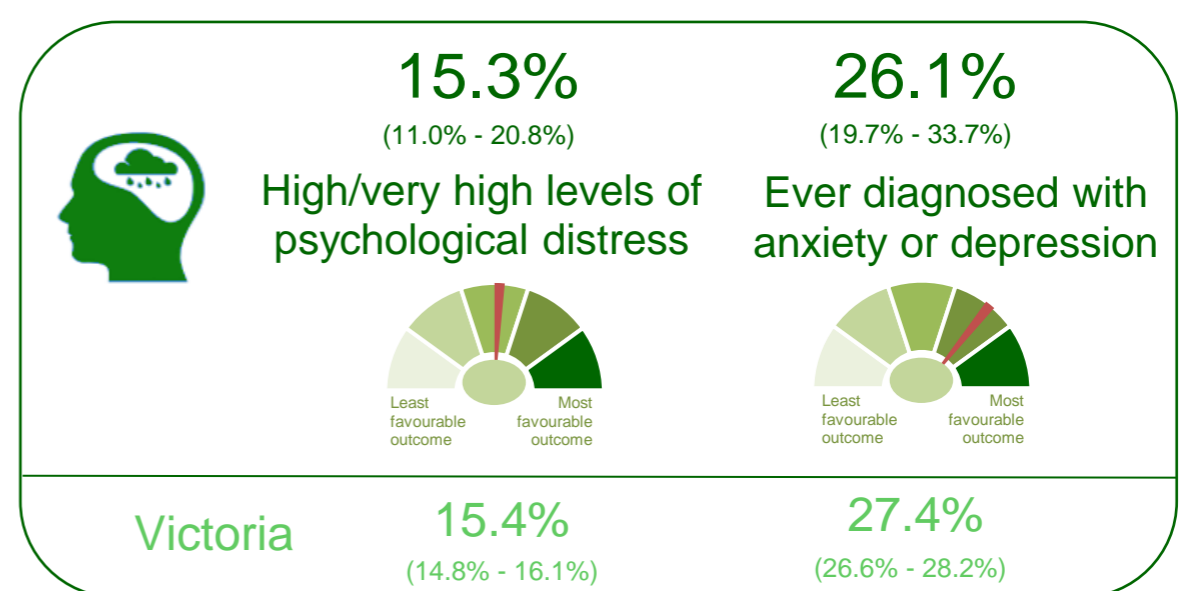
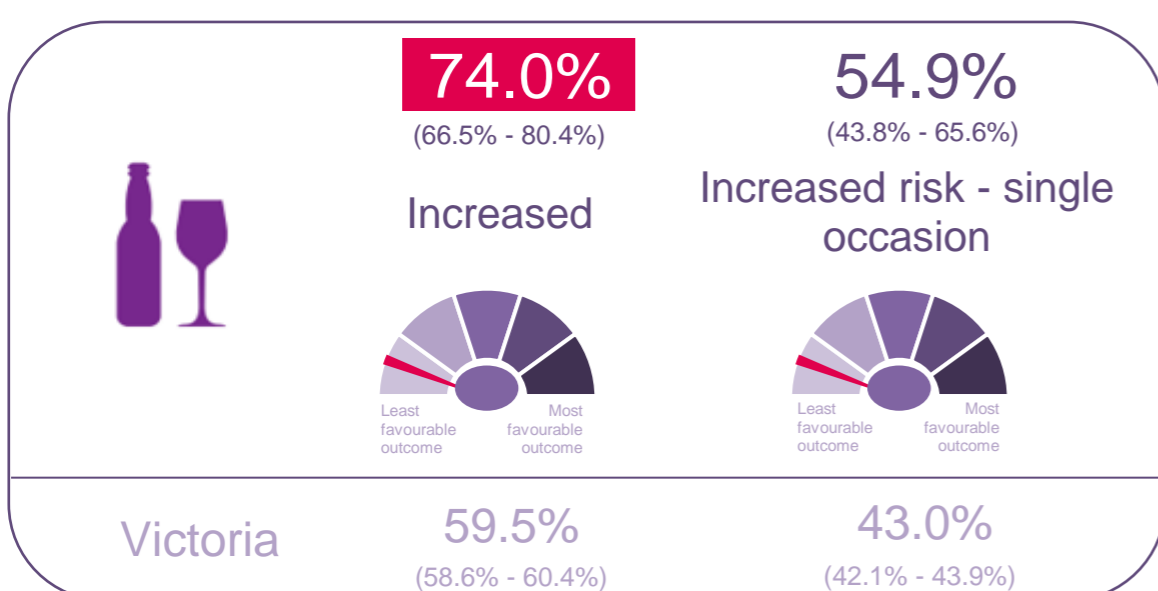
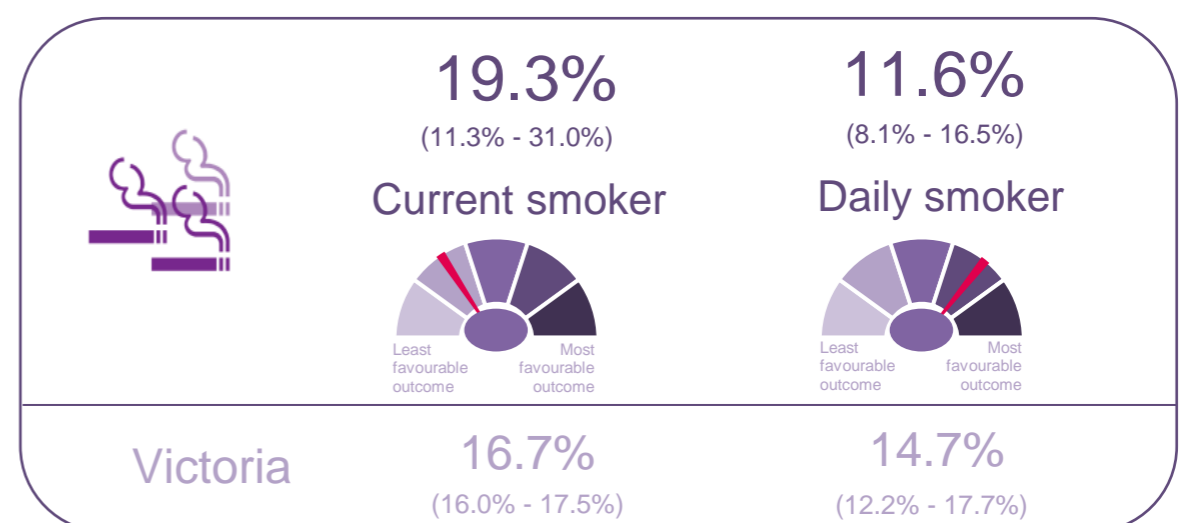
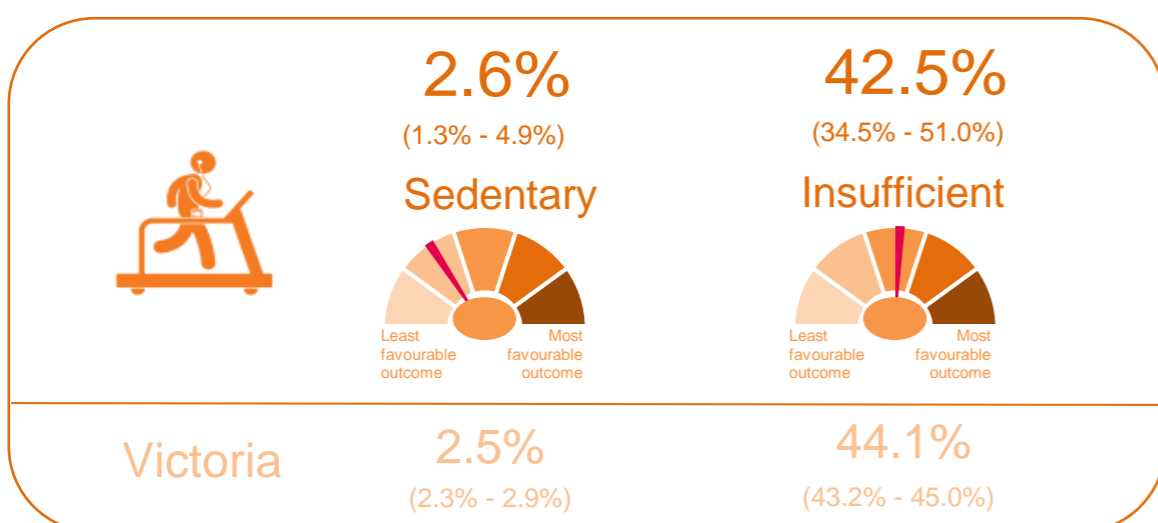
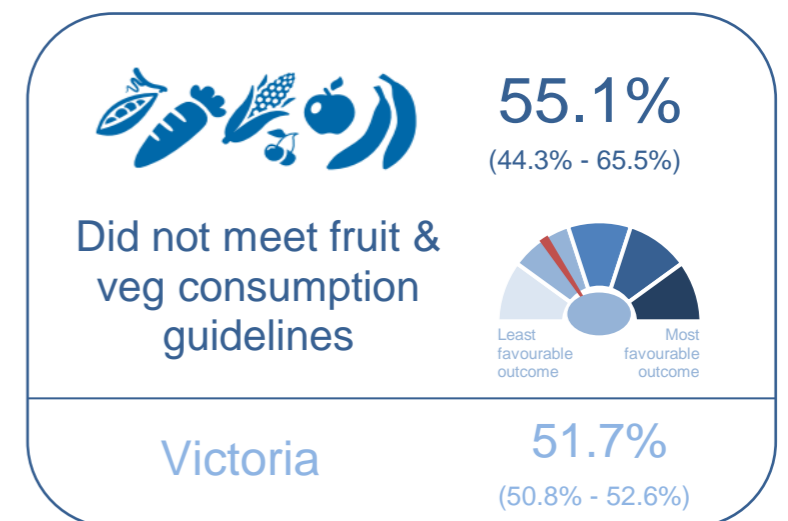
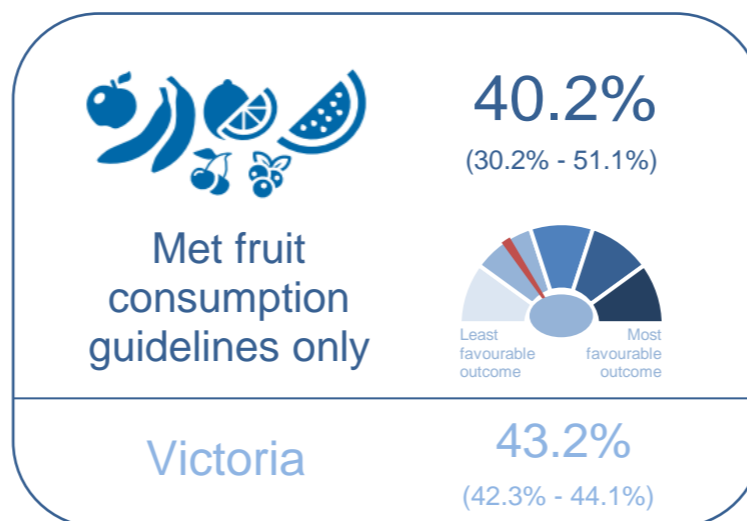
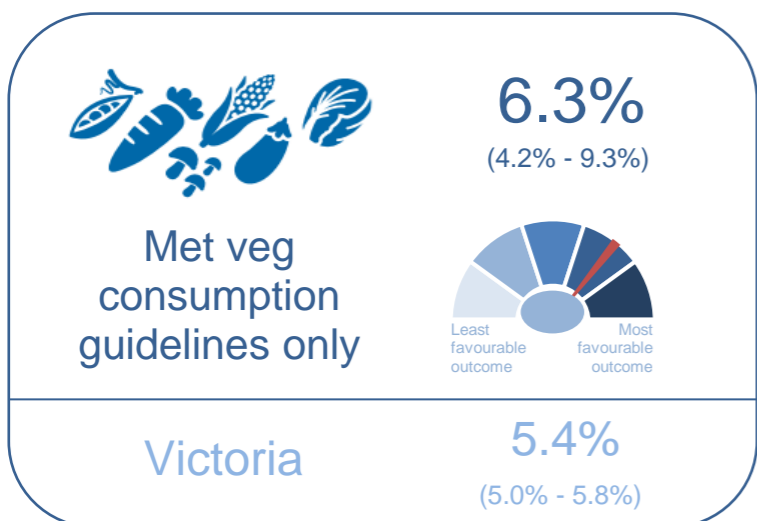
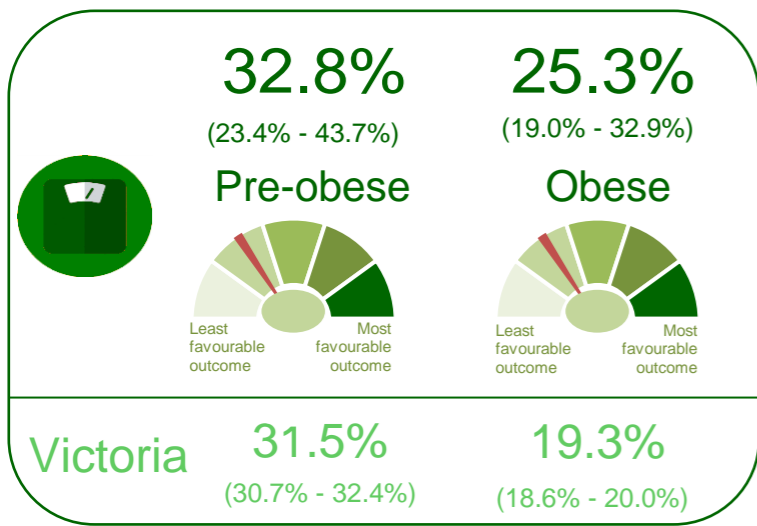
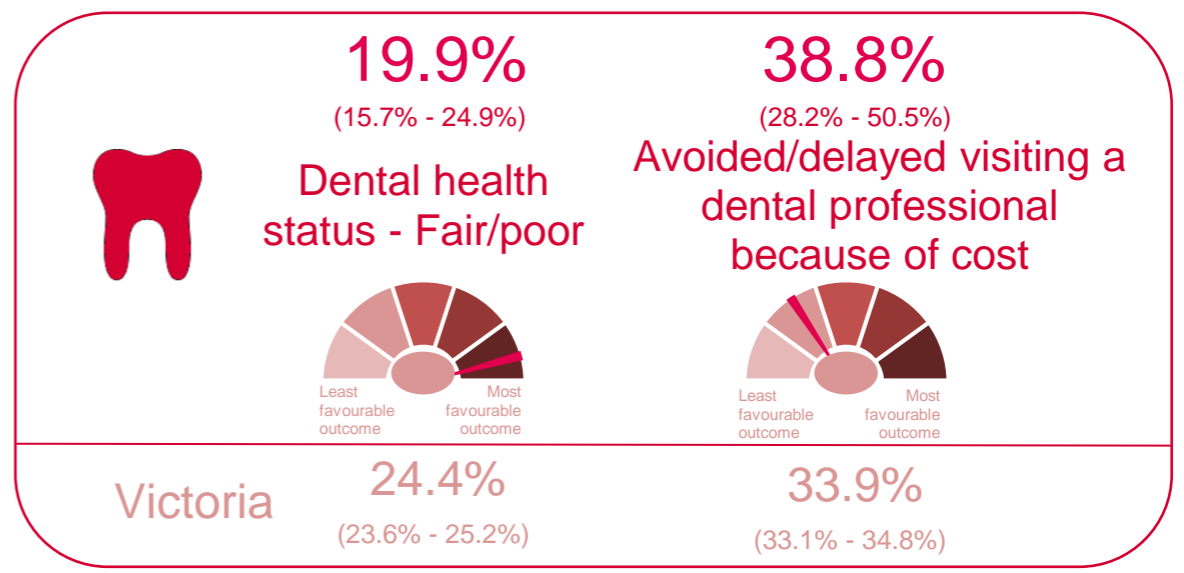
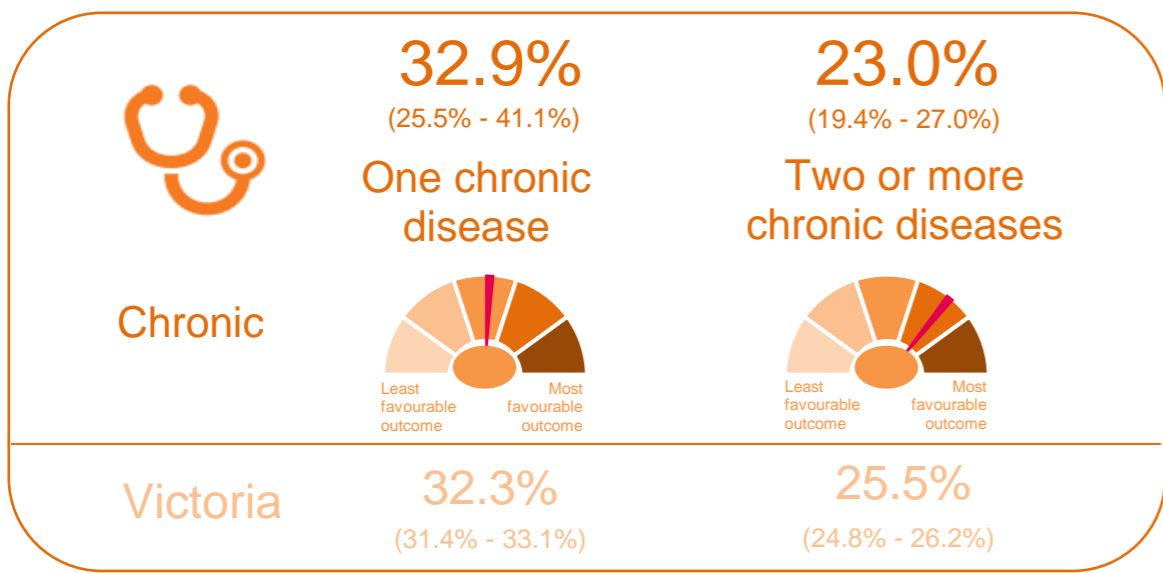
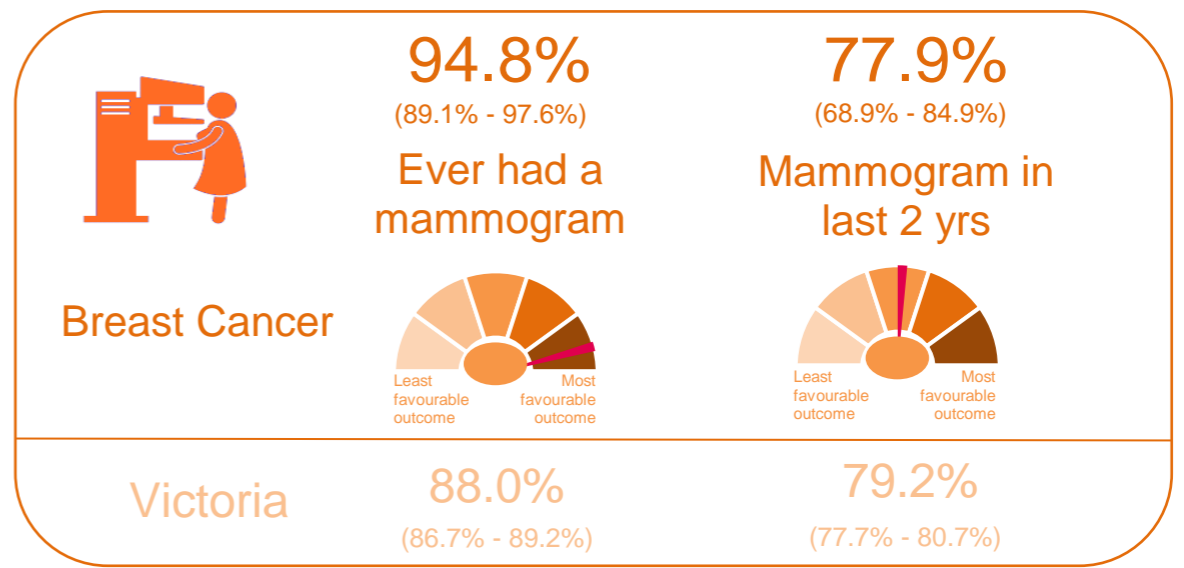
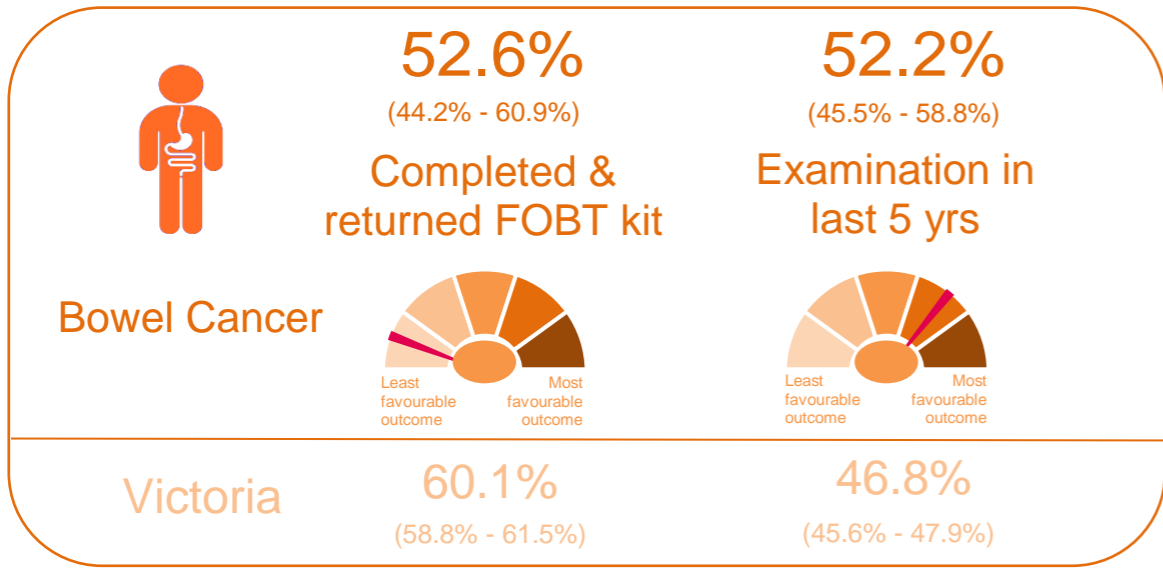
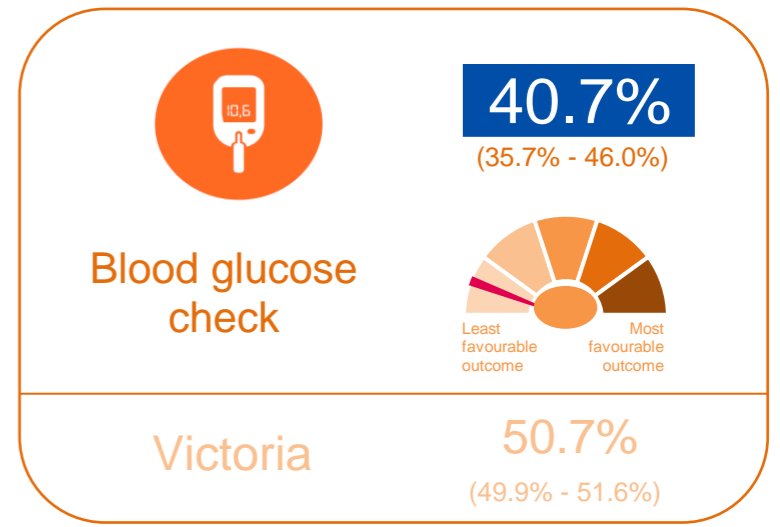
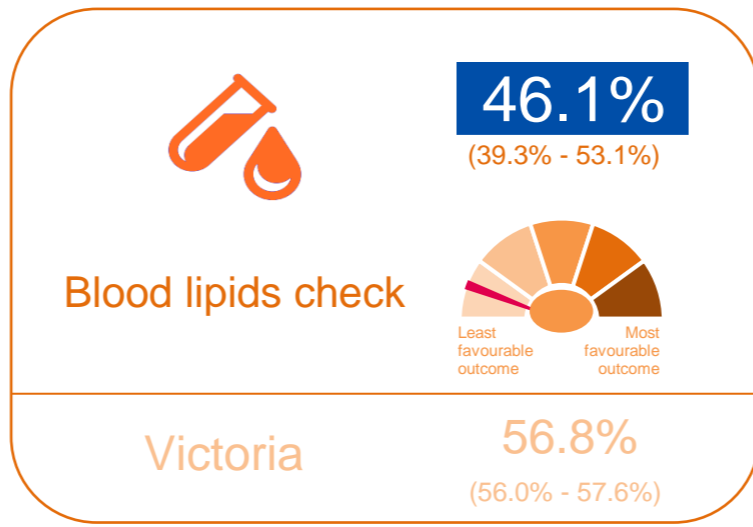
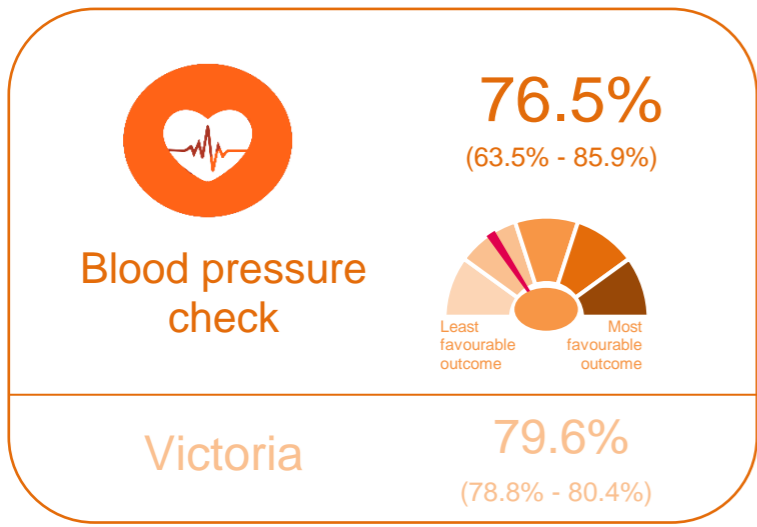


Moyne

Victorian Population Health Survey Selected Results, 2017





Notes:

* 95% Lower and Upper Confidence Intervals are shown in paranthesis below the estimate.

* Estimates that are significantly different (statistically) from the corresponding estimate for Victoria are identified by colour as follows: **10.7%** Above **0.9%** Below

*Health outcome^:
 Lightest (1) = Q1 - Least favourable
 Q2
 Q3
 Q4
 Darkest (5) = Q5 - Most favourable

Q1 - Least favourable Q5 - Most favourable

^ LGAs grouped into quintiles (Q) based on health outcome.
 [Q1 = Group of 15 LGAs with least favourable outcome
 Q2-Q5 = Groups of 16 LGAs with progressively better outcomes]