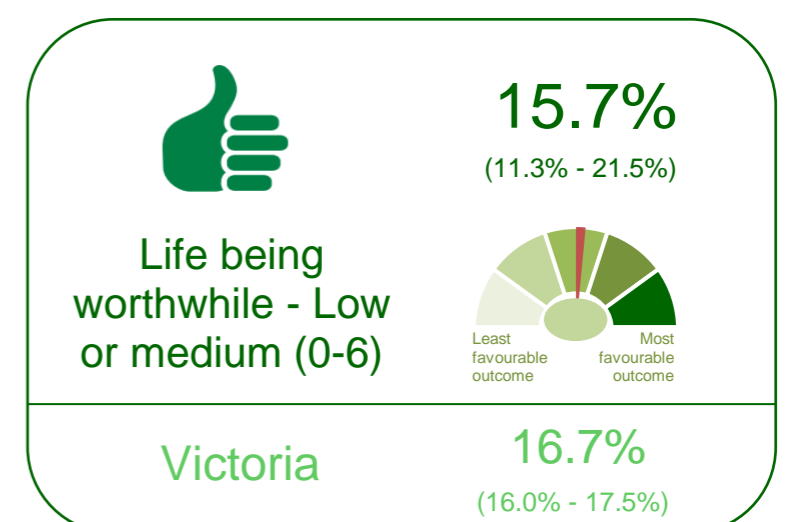
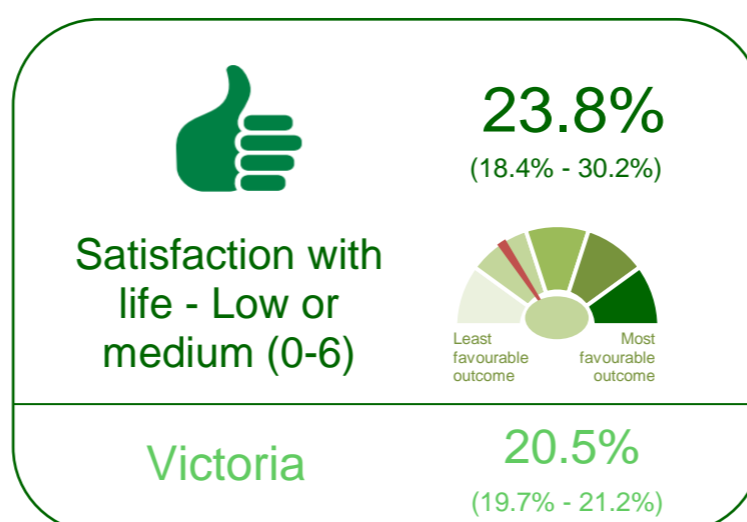
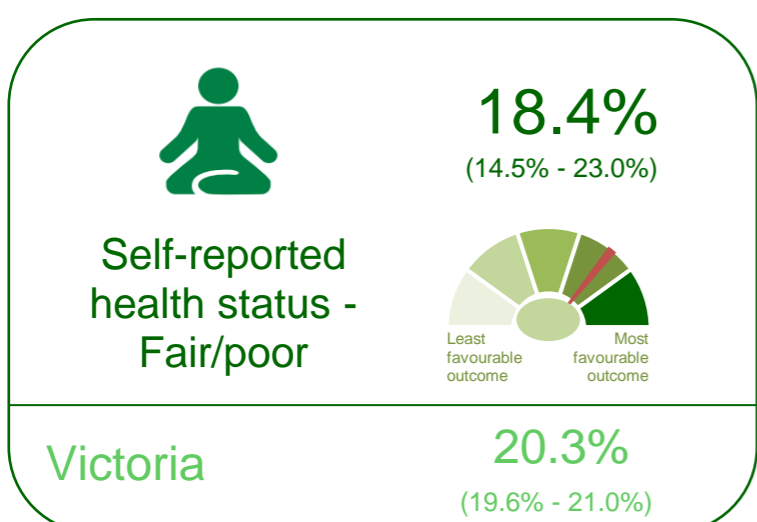
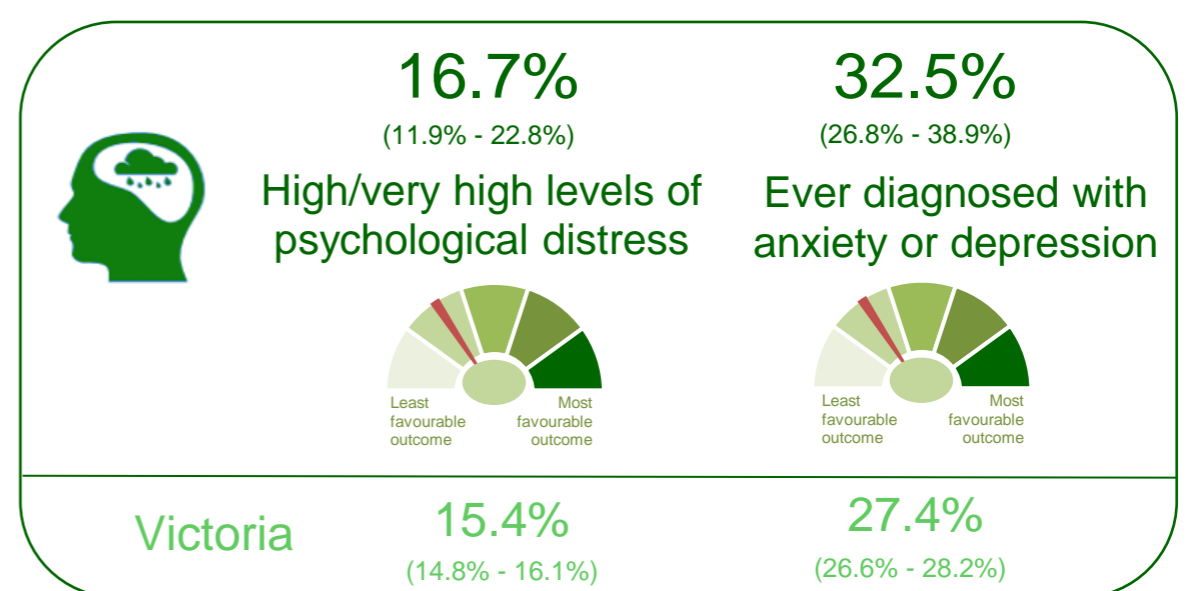
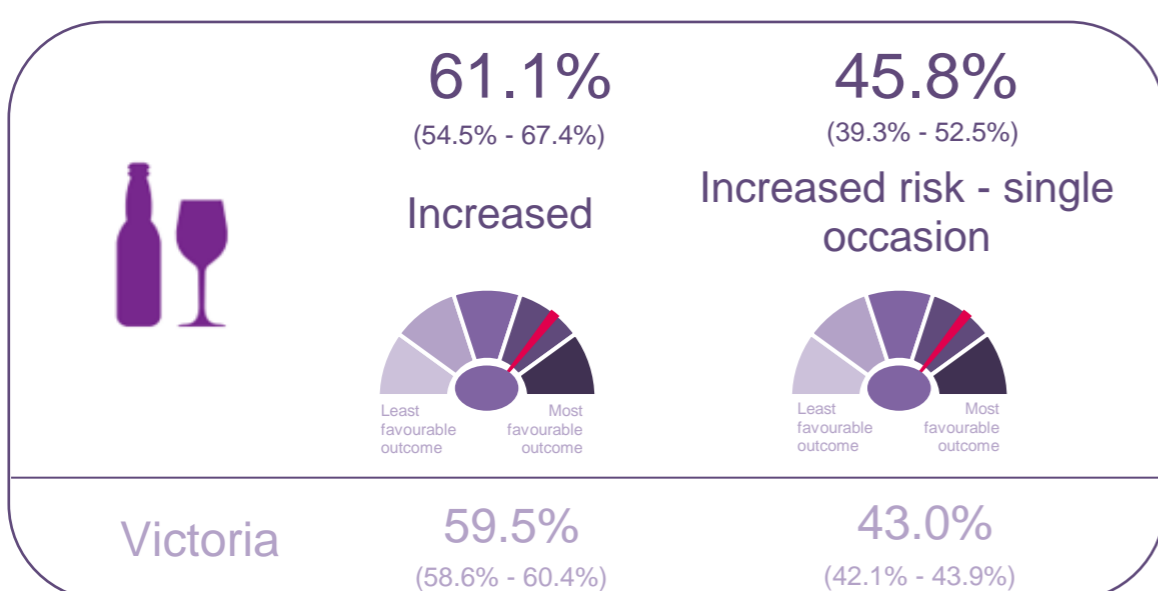
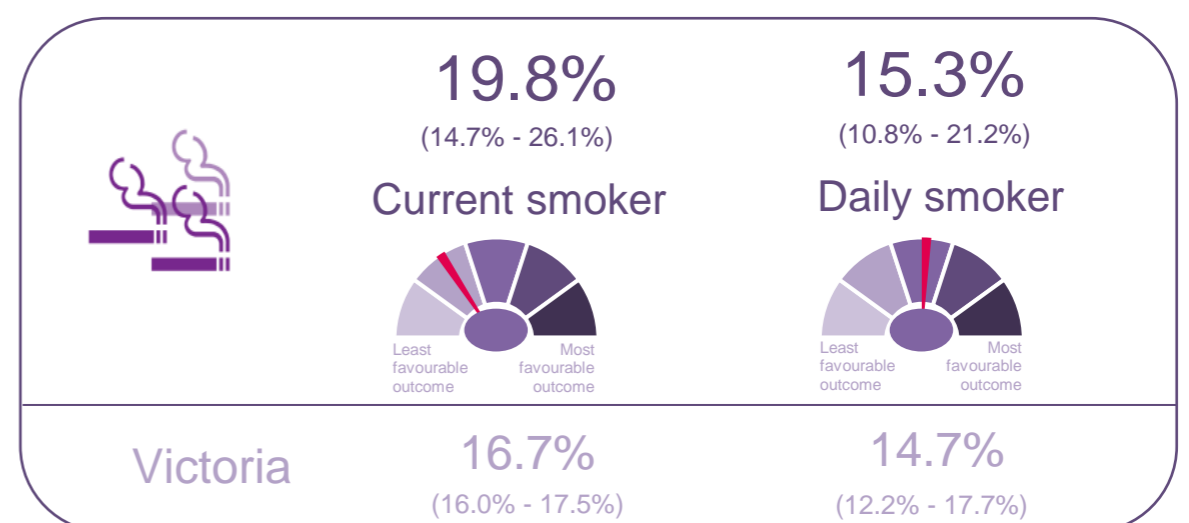
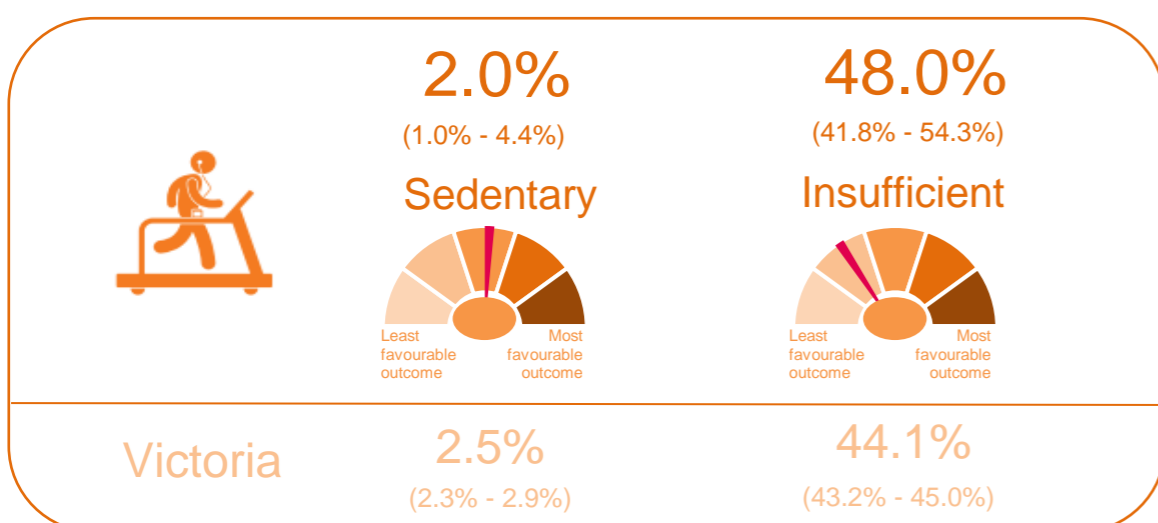
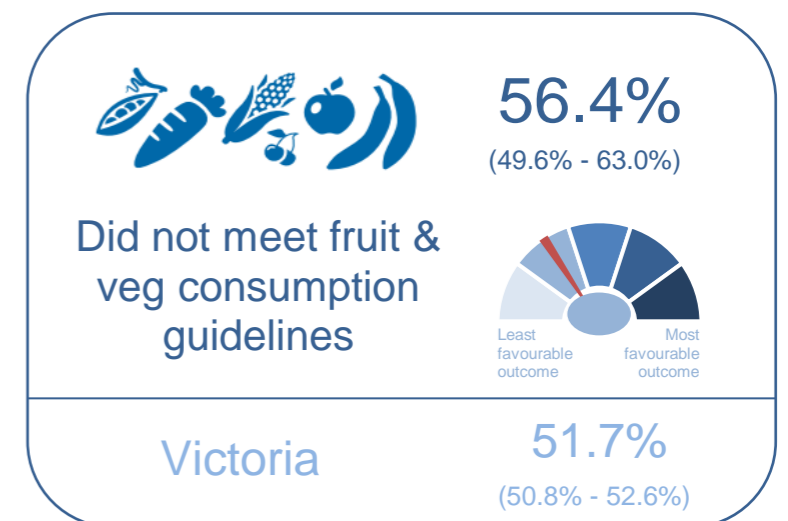
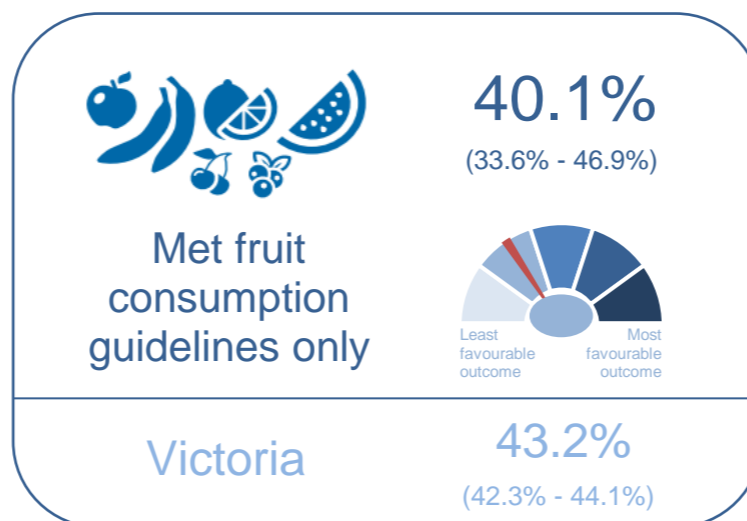
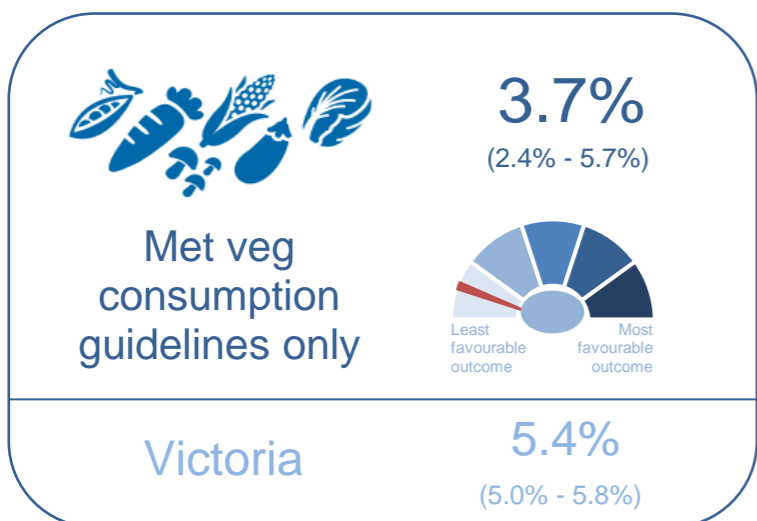
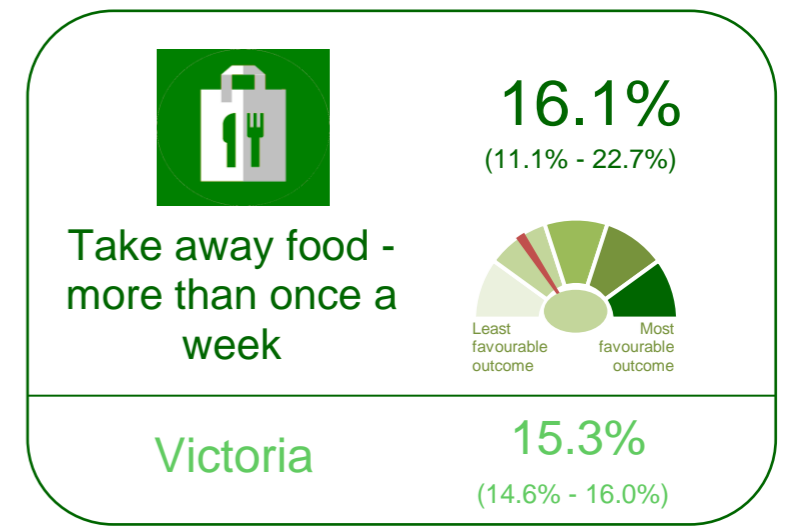
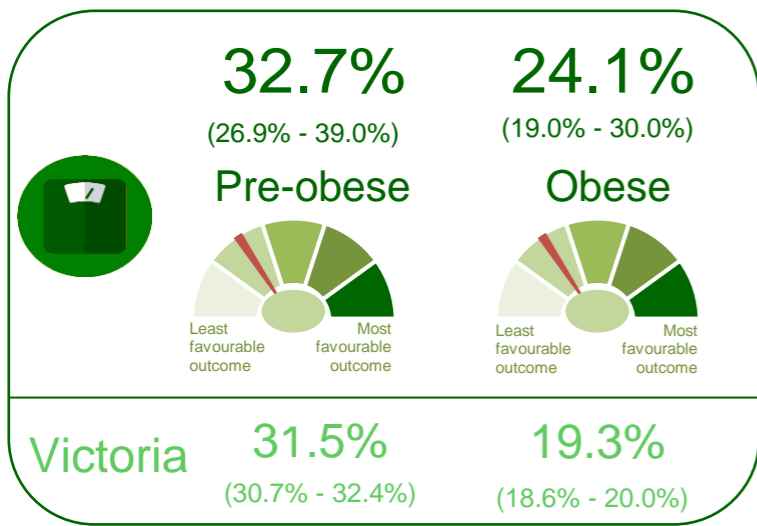
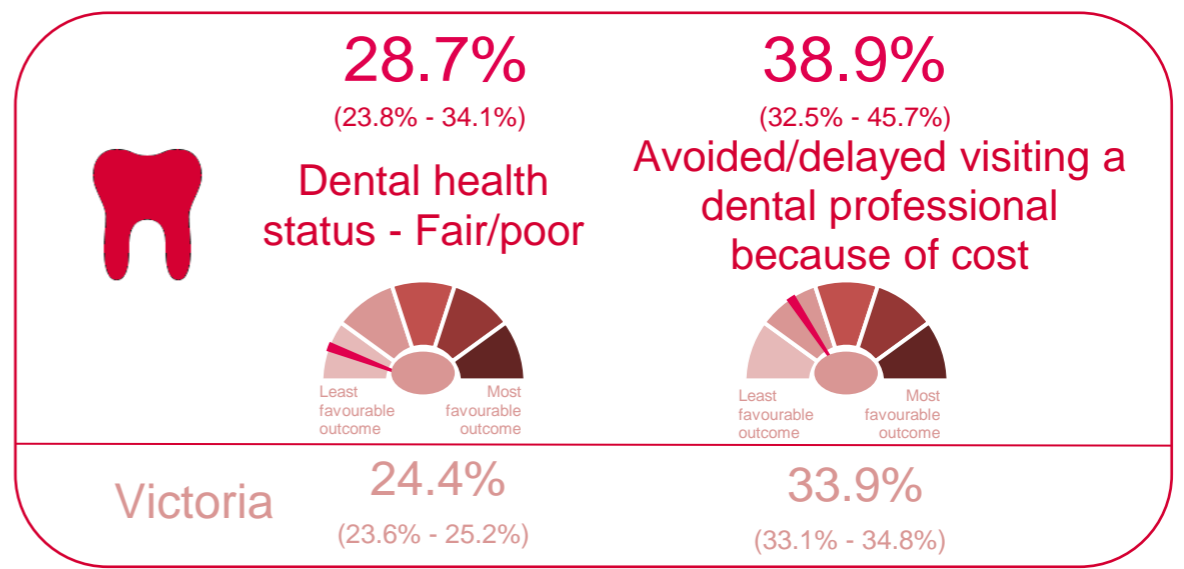
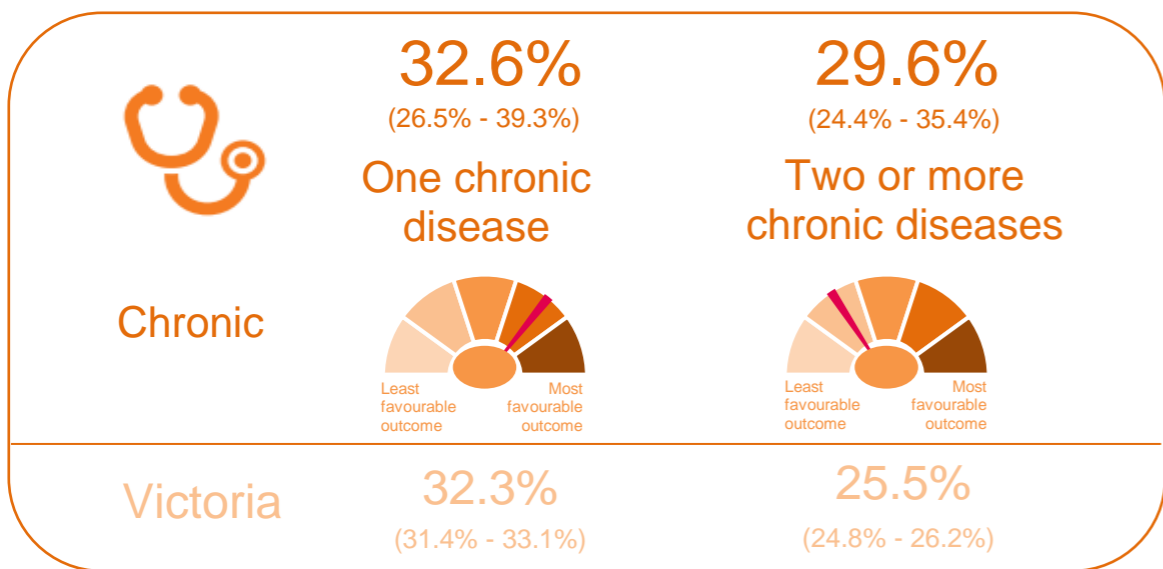
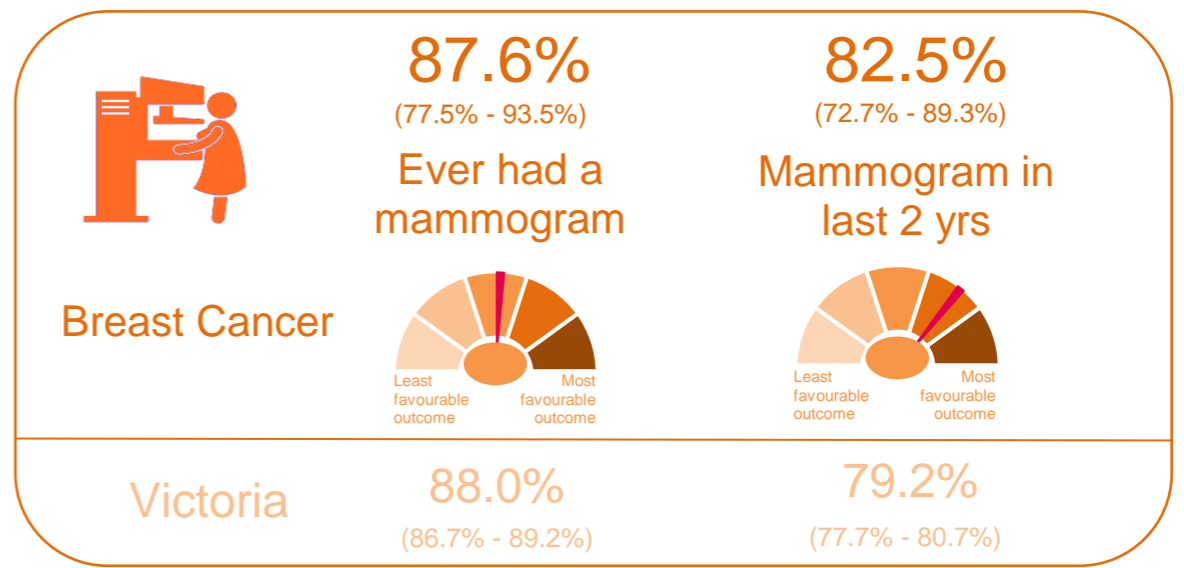
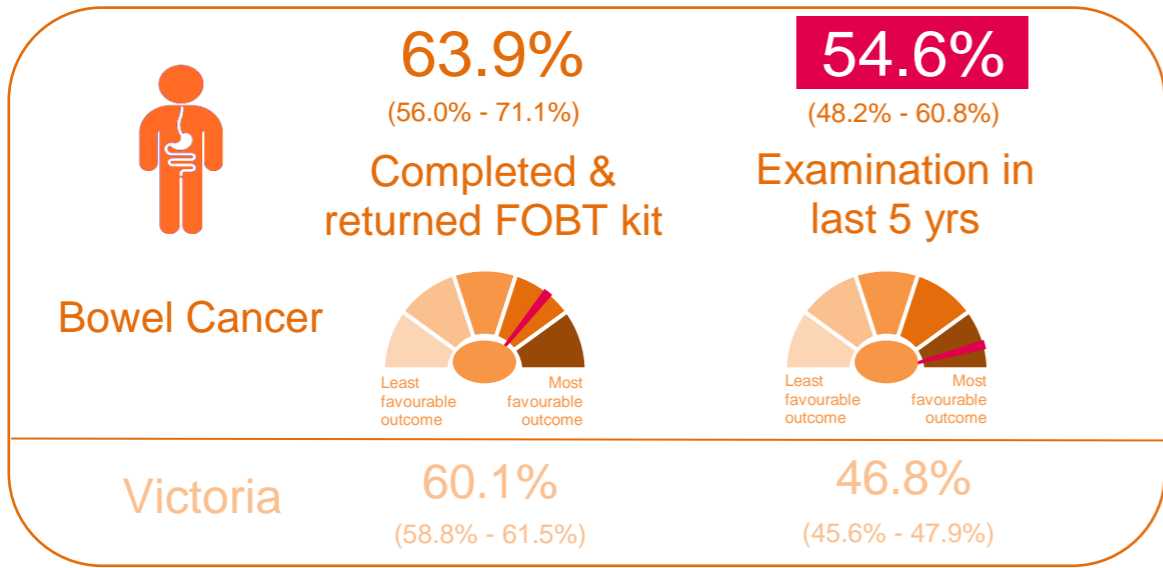
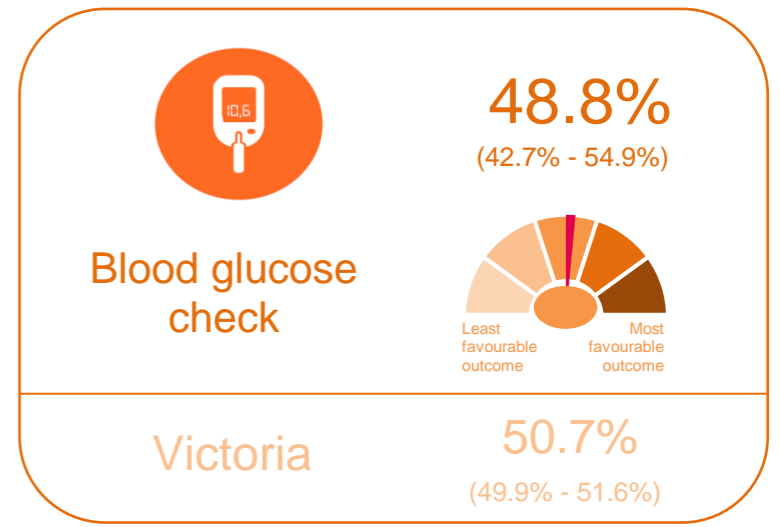
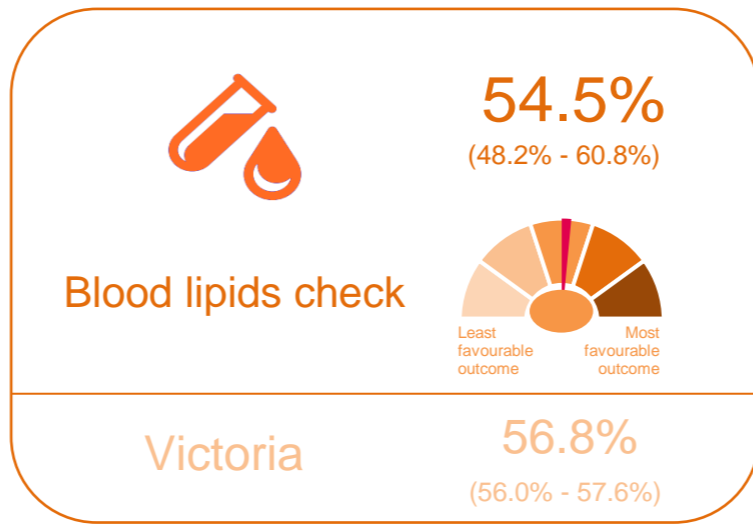
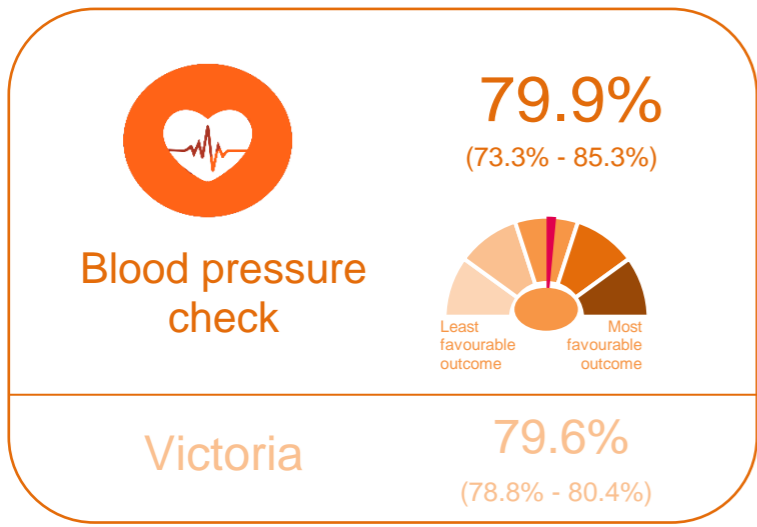


# Warrnambool

## Victorian Population Health Survey Selected Results, 2017





Notes:

\* 95% Lower and Upper Confidence Intervals are shown in paranthesis below the estimate.

\* Estimates that are significantly different (statistically) from the corresponding estimate for Victoria are identified by colour as follows: **10.7%** Above **0.9%** Below

\*Health outcome^:  
 Lightest (1) = Q1 - Least favourable  
 Q2  
 Q3  
 Q4  
 Darkest (5) = Q5 - Most favourable

^ LGAs grouped into quintiles (Q) based on health outcome.  
 [Q1 = Group of 15 LGAs with least favourable outcome  
 Q2-Q5 = Groups of 16 LGAs with progressively better outcomes]